

FLOPPY DRIVE EMULATOR
3^{1/2}, 5^{1/4} and 8 inches
floppy disk drives replacement

Most of floppy disk drives are no longer manufactured. Floppy disk manufacture will be stopped in a very near future. The few still manufactured ones use new connection technologies. Therefore, users have to get their floppy disk drives replaced by second hand ones, less and less reliable.

Datastorage, worried about the everlastingness of these systems, has developed the DTX200 floppy drive replacement in order for these customers to recover the reliability of their device.

THE DTX200 CAN REPLACE ALL THE FLOPPY DISK DRIVES, FOR EXAMPLE :

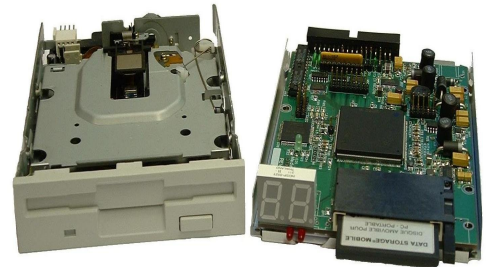
8" DRIVES : SHUGART SA850, CDC BRB8A,
YE DATA , ...

5^{1/4}" DRIVES :

Full height : SHUGART SA400, MPI 92S,
TANDON TM100, ...

Semi-height : TEAC : FD-05xx, FD-55xx, FD-235xx,
EPSON : SD-681L, ...

3^{1/2}" DRIVES : ALPS : AL FD 7xx,
PANASONIC : JU-25xxx,
SONY : MPF-520xx, MPF-920xx, ...
YE DATA : YD702D...



And all other Floppy disk drives...

YOUR COMPLETELY SAFELY DATA...

The Datastorage DTX200 use a **CF™card** to stock your data. The access are **ultra-fast**, and the risks of drive failure are almost **non-existent**, because the DTX200 has no mechanical parts moving. A **preventive detection system** is incorporated to deal with an eventual failure. You could use the CF™ as you used your floppy disk except you can now stock (as an optional extra) the equivalent of up to **64 floppy disks** (in option). You will be able to choose the various floppy disks thanks to the **addressing reconnaissance**, as an optional extra.

EASY INSTALLATION

The Datastorage DTX200 uses as much space as a **3^{1/2}" floppy disk drive**. It will be mechanically adapted for your larger ones. The DTX200 is pre-programmed to have the **same features** with the floppy drive to replace. Each floppy disk drive using a specific connection technology, an **adaptation card** will be developed for each of your floppy drive. It only has to be connected in place of the replaced floppy drive in a completely **transparent** way for your system.

RELIABILITY

You can work with a dust environment and vibrations without any trouble.

APPLICATION

- Cash register
- Robots
- Plane
- Boat
- Submarine

EXTENDED WARRANTY

The Datastorage DTX200 has a **two years warranty with workshop return**, whilst the floppy disk drives are no longer repaired.

This document has no contractual value, the products may change at any time without any prior notice.